

Autism Spectrum Disorder: A Neurobiological Perspective for Multi-disciplinary Practice

Online Continuing Education Program

The Center for Autism and Early Childhood Mental Health at Montclair State University

This continuing education program offers professionals the opportunity to examine the neurobiological foundations of human interaction and behavior, exploring the connection to the core characteristics of persons diagnosed with Autism Spectrum Disorder (ASD).

[Apply HERE](#)

Professionals will gain a deeper understanding of the heterogeneity of this population and the need for individualized interventions based on current research. The program will address barriers to educational and community inclusion of children diagnosed with ASD and will incorporate evidence-based strategies to increase teachers and allied health professional's skill and confidence in supporting individuals with ASD. The concepts covered in this course are relevant for professionals working with and parents/caregivers of children with ASD from early childhood through school-age. The interdisciplinary content of this program is designed for professionals in the fields of education, psychology, counseling, social work, pediatrics, nursing, home visiting, early intervention, child protection, child advocacy, speech and language therapy, occupational therapy and physical therapy.

The 18-session synchronous on-line program runs from October 2019 through March 2020 meeting on Mondays from 6-8pm EST through a virtual on-line platform. Participants will also be provided readings to complete in advance of each session. Successful completion of the program will require attendance of at least 90% of sessions. Professional development hours for New Jersey teachers will be provided. Certificates documenting content for continuing education units (CEU's) will be provided for other participants to submit to their professional organizations.

Cost for this continuing education program is \$2,000, payable in 5 equal installments due on the first of each month. A deposit of \$400 is due upon acceptance and will be counted towards the final payment. Cash, check or credit accepted.

Mandatory Group Information Sessions

We have 3 dates scheduled to meet on-line that are listed below. This time is intended for us to share information about the program, answer your questions and get to know you!

Please choose one time to join us:

Monday September 9th 6-7pm EST

Saturday September 14th 9-10am EST

Monday September 16th 8-9pm EST

For each of these dates, use the Zoom platform:

<https://zoom.us/j/843033877>

or phone: 646 876 9923

Meeting ID: 843 033 877

Class Dates: 2019-2020 Schedule Mondays 6-8pm EST

2019

October 14, 21, 28

November 4, 11, 18, 25

December 2, 9

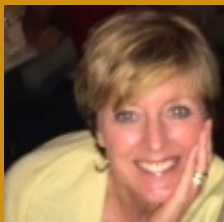
2020

February 3, 10, 17, 24

March 2, 9, 16, 23, 30

Core Faculty

Dr. Corinne Catalano Dr. Eileen McKeating



MONTCLAIR STATE
UNIVERSITY

Center for Autism and
Early Childhood Mental Health

Questions? Email:
caecmh@montclair.edu